

# *Septo*Accessories



# SeptoFipo Strips

## Aluminum Oxide Coated Polyester Strips

SeptoFipo strips are recommended for finishing and polishing the proximal planes of composite restorations.

Each strip has fine and medium grits with a neutral space for ease in insertion. Use the neutral center to place the strip in the proximal space. Made from polyester with aluminum oxide coating, SeptoFipo strips do not leave marks on the restoration as they have no metal content.

Available in 2.5mm and 4mm widths  
(7" long) 100 per box.



# SeptoMatrix Sectional Retainers

## SeptoMatrix Retainers

The SeptoMatrix System is composed of sectional matrices and reinforced rings: Blue (Hard) & Pink (Soft), for easy and fast construction of perfect, tight, contact points.



## Triangular Tips

The SeptoMatrix System also includes triangular silicone tips for tight adjustment and contact points. Tips are autoclavable.

## Matrices

The SeptoMatrix System also includes anatomical matrices. Available in large, medium and small. Matrices are autoclavable.



# SeptoWheels PX

Solid felt wheels impregnated with ultra-fine dehydrated polishing paste, activated with a few drops of water, provide excellent polishing and natural shine on all surfaces. Comes with snap-on mandrel system.



Felt wheels:  
Great for post-bleaching



SeptoWheels  
Snap-on Mandrel



## SeptoDiscs

Finishing and polishing discs for composites.  
Use with pop-on mandrel system, for easy and fast installation of the discs. One-sided abrasive surface for mesial and distal finishing.



SeptoDiscs  
Pop-on Mandrel



## SeptoWedges

Anatomically shaped for a better adjustment to the interproximal spaces.  
Available in 5 color-coded sizes.



#1 (yellow)



#2 (blue)



#3 (red)



#4 (violet)



#5 (natural)

#	HEIGHT	WIDTH	LENGTH
1	2.2mm	1.4mm	12mm
2	2.2mm	1.4mm	13mm
3	2.2mm	1.6mm	14mm
4	2.2mm	1.6mm	15mm
5	2.5mm	2.0mm	16mm

ITEM #	PRODUCT	DESCRIPTION
01C4000	SeptoWheels PX	Kit: 12 wheels + 1 SeptoWheel Snap-on Mandrel
01C4001	SeptoDiscs	Kit: 120 assorted abrasive discs + 1 SeptoDisc Pop-on Mandrel
01C4002	SeptoDiscs	Refill: 1/2" - 50 assorted discs: 15 ea. Coarse, Medium 10 ea. Fine, Ex-fine
01C4003	SeptoDiscs	Refill: 1/2" - 50 coarse abrasive maroon discs
01C4004	SeptoDiscs	Refill: 1/2" - 50 medium abrasive pink discs
01C4005	SeptoDiscs	Refill: 1/2" - 50 fine abrasive light pink discs
01C4006	SeptoDiscs	Refill: 1/2" - 50 extra fine abrasive white discs
01C4010	SeptoMatrix Sectional	Kit: 100 assorted matrices (L/M/S) + 2 reinforced rings + 14 triangular silicone tips
01C4011	SeptoMatrix Sectional	Kit: 50 assorted matrices (L/M/S) + 2 reinforced rings + 8 triangular silicone tips
01C4012	SeptoMatrix Sectional	Refill: 1 reinforced ring HARD (Blue) + 8 triangular silicone tips
01C4013	SeptoMatrix Sectional	Refill: 1 reinforced ring SOFT (Pink) + 8 triangular silicone tips
01C4014	SeptoMatrix Sectional	Refill: 50 assorted matrices: 15 Large, 20 Med., 15 Small
01C4015	SeptoMatrix Sectional	Refill: 50 large matrices
01C4016	SeptoMatrix Sectional	Refill: 50 medium matrices
01C4017	SeptoMatrix Sectional	Refill: 50 small matrices
01C4018	SeptoMatrix Sectional	Refill: 50 triangular silicone tips

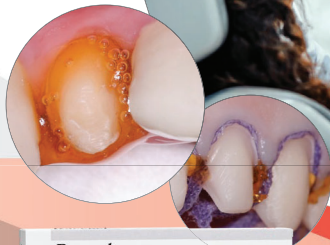


205 Granite Run Drive, Suite 150 · Lancaster, PA 17601  
[www.septodontusa.com](http://www.septodontusa.com) · 1.800.872.8305

ITEM #	PRODUCT	DESCRIPTION
01C4020	SeptoWedges	Refill: 100 assorted color-coded wooden wedges
01C4021	SeptoWedges	Refill: 100 wooden wedges #1 – yellow
01C4022	SeptoWedges	Refill: 100 wooden wedges #2 – green
01C4023	SeptoWedges	Refill: 100 wooden wedges #3 – red
01C4024	SeptoWedges	Refill: 100 wooden wedges #4 – violet
01C4025	SeptoWedges	Refill: 100 wooden wedges #5 – natural
01C4030	SeptoDiscs Mandrel	Refill: 1 pop-on mandrel
01C4031	SeptoWheels Mandrel	Refill: 1 snap-on mandrel
01C4038	SeptoFipo Strips	100 count: 2.5mm strips
01C4039	SeptoFipo Strips	100 count: 4mm strips



**Save & Refill Your Kit!**  
 Order individual pieces for your kit  
 through your preferred dental dealer.



SeptoAccessories can be used with Biodentine®, a bioactive dentin replacement, and Racegel® (25% aluminum chloride), our thermogelifiable gel for gingival preparation.